

GREAT TURNING CENTERS INSTRUCTION MANUAL

MODEL NO : GT-80D-2S+CF

S/O NUMBER : T257070

TYPE OF CONTROLLER : FANUC 18I-TB

SERIAL NUMBER : TDF9007

**ROUNDTOP MACHINERY INDUSTRIES CO.,LTD.
NO.1056, CHUNG-SUNRD RD., SHEN KANG HSIANG,
TAICHUNG HSIEN, TAIWAN. R.O.C.**

TEL:886-4-5624721

FAX:886-4-5613886

886-4-5613887

E5H0106**JOHNFORO**

2-2

1-1 MACHINE SPECIFICATIONS(FANUC)

SPECIFICAT		MODEL	GT-80D-2S
CAPACITY	Swing Over Bed		∅ 1550mm
	Swing Over Cross Slide		∅ 1270mm
	Chuck Size		Strong Power Chuck N-220A15
			Hydraulic Cylinder SMW 450/165 VSG
	Bar Capacity		∅ 165mm
SPINDLE	Spindle Nose		A2-15
	Spindle Bore		∅ 185mm
	Spindle Speed Step(S)		Auto 4-speeds
	Spindle Speed Range		1000rpm
	Spindle Motor		37/30kw
	Spindle Bearing Diameter		∅ 240mm
TURRET	No. Of Tools		12
	Cross Travel(X-Axis)		685mm
	Longitudinal Travel(Z-Axis)		2000mm
	Rapid Traverse		X:10 Z:12M/min
SUB-SPINDLE	Sub-Spindle Nose		A2-15
	Sub-Spindle Travel		1700mm
	Sub Spindle Taper		MT#7
POWER	Servo Motor(X-Axis)		7kw
	Servo Motor(Z-Axis)		7kw
WEICHT			32600kg
MACHINE DIMEMSSION(WxH)mm			3695x5292mm
MACHINE DIMEMSSION(L)mm			9800mm

*Specifications subject to change without prior notice

1-2 MACHINE ACCESSORIES

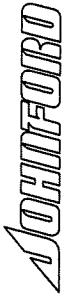
STANDARD ACCESSORIES :

1. Coolant system
2. Splash guard
3. Through hole 3-jaw chuck
4. Programmable hydraulic tailstock
5. Chain type chip conveyor
6. Tool box and various manuals
7. Tool holders (direct mounting type)
8. Auto lub. with alarm
9. Halogen work lamp

OPTIONAL ACCESSORIES :

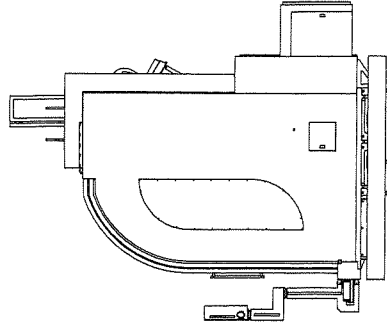
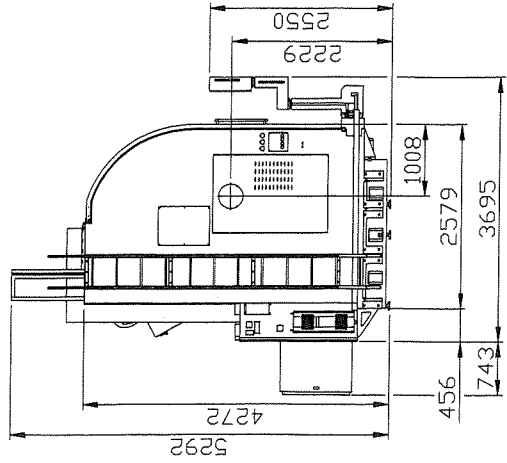
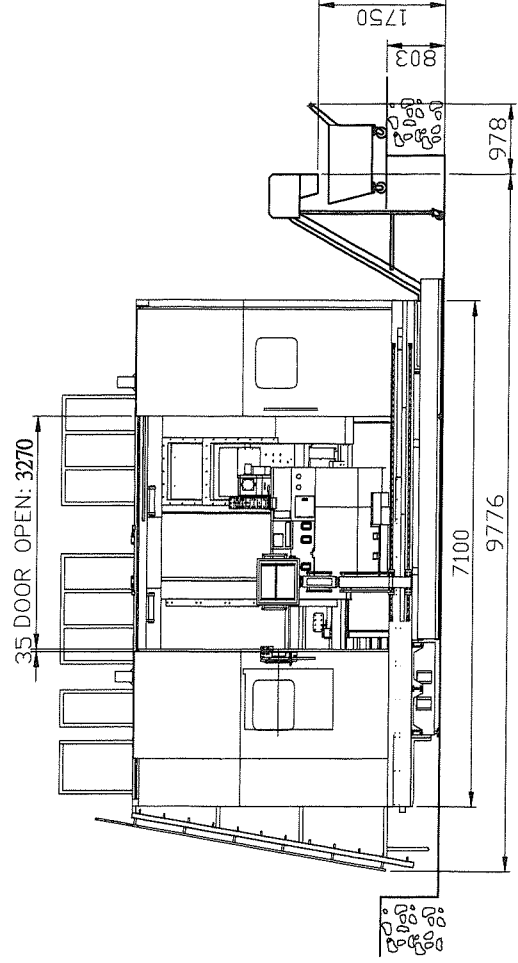
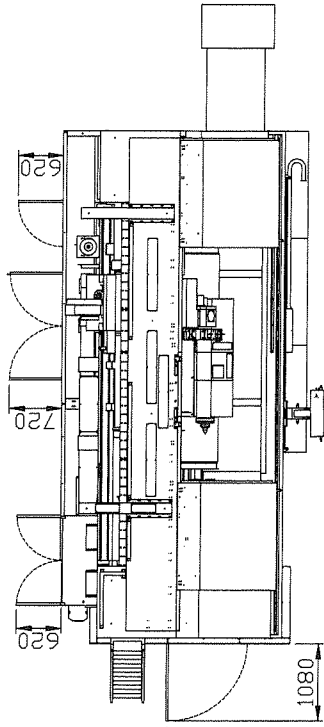
1. C-axis (C.S Axis without Gear Box/C.F Axis with Gear Box)
2. Touch sensor (manual or Auto tool presetter)
3. Tool holders (VDI type)
4. Super cap (for 18T)

Note: Optional accessories in the table above vary depending on customer's order!

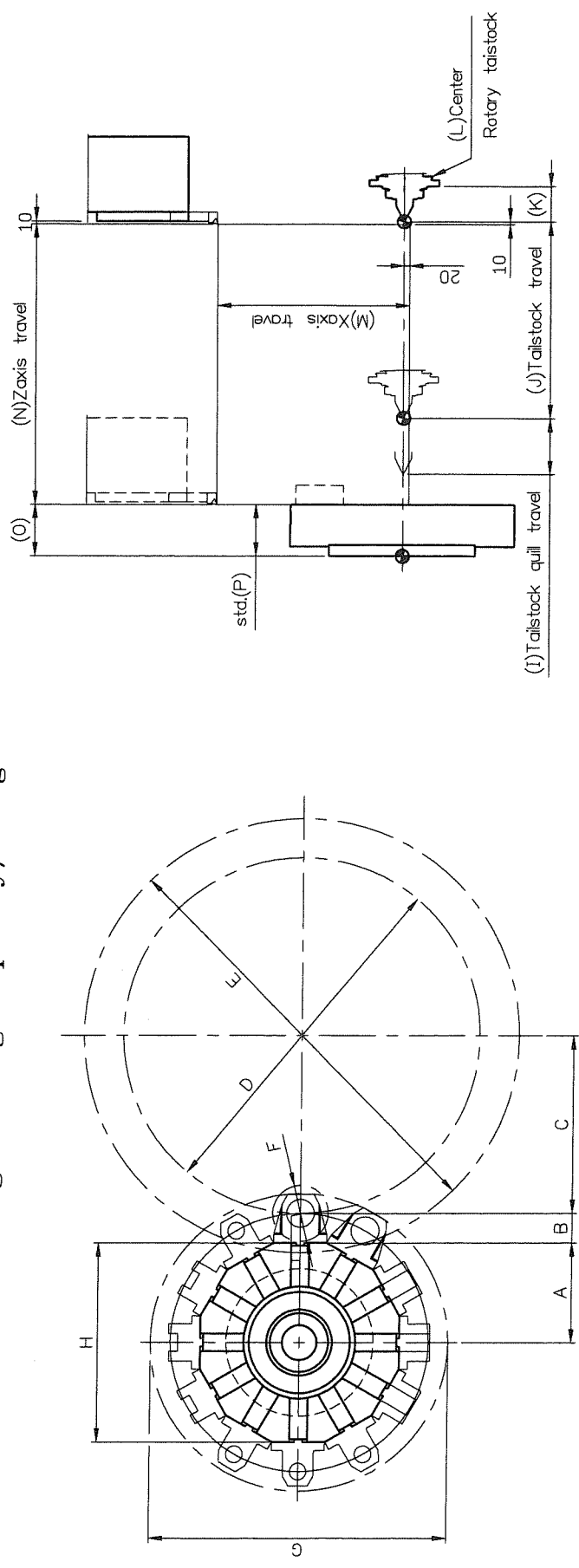


E5H0207

1-3 DIMENSION
GT-80D-2S

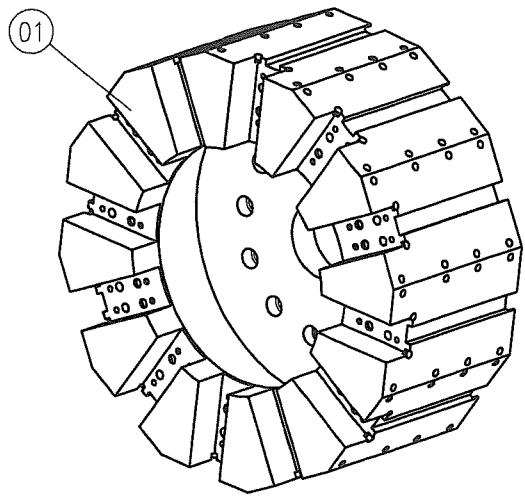
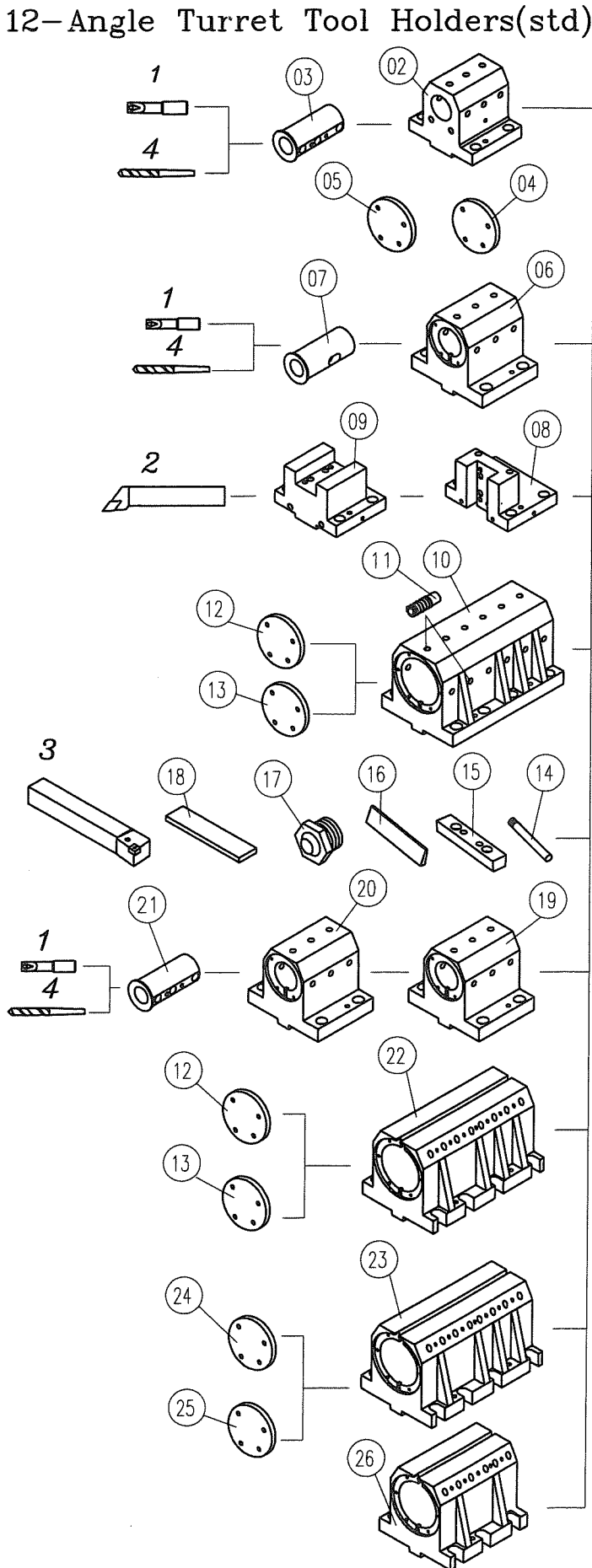


12-Angle Turret Working Tooling Capacity/Range



Item Mode	A	B	C	D	E	F	G	H	I	J	K	L	M	N	SPINDLE TYPE	O	P
GT-40										700				1000	A Type	122	122
GT-80										1700				2000	B Type	149	149
GT-120										2700				3000	C Type	155	155
GT-160										3700				4000	D Type	155	155
GT-200	355	105	635	1270	1550	200	1060	710	200	4700	125.5	MT#7	685	5000			
GT-240										5700				6000			
GT-275										6700				7000			
GT-320										7700				8000			
GT-355										8700				9000			
GT-395										9700				10000			

12-Angle Turret Tool Holders(std)



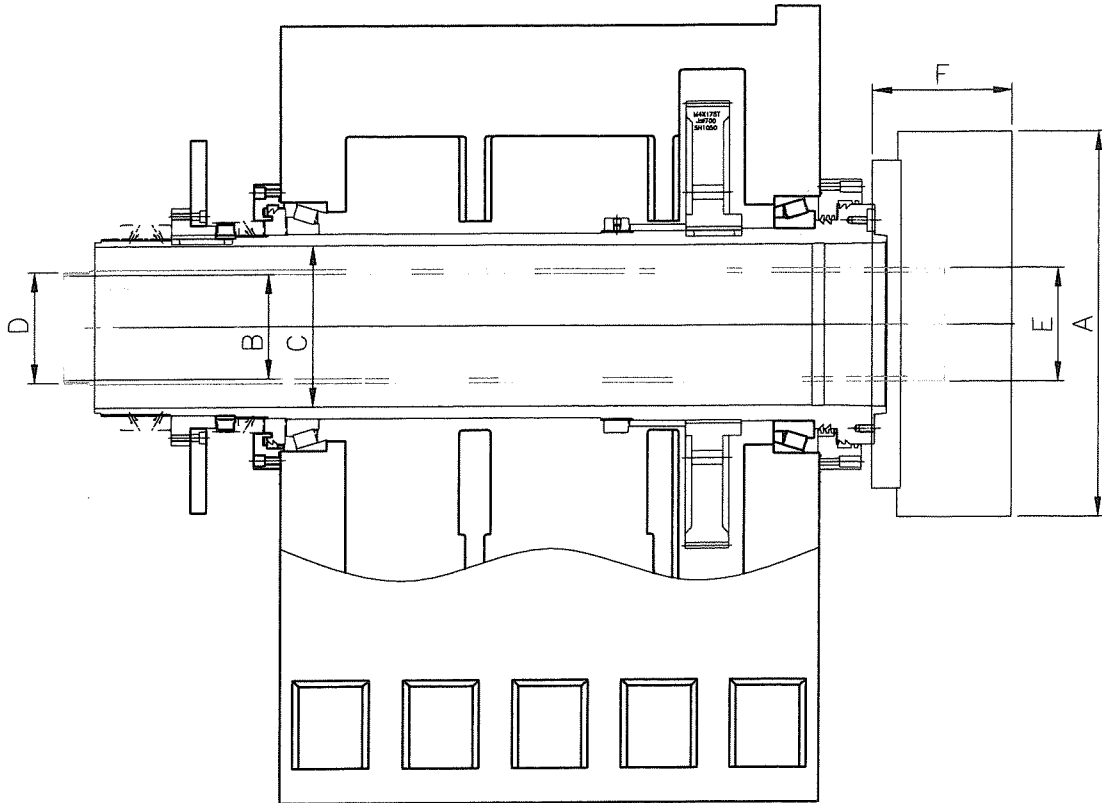
No.	Metric system			Empiral system		
	Item	Amount	Remarks	Item	Amount	Remarks
01	5H6002	1		5H6018	1	
02	5H6005	3	Ø60	5H6019	2	2"
	5E6021	1	Ø12	546058A	2	1/2"
03	5E6022	2	Ø16	546055A	2	1"
	5E6023	2	Ø20	546054A	2	1 1/4"
	5E6024	2	Ø25	546062A	2	1 1/2"
	5E6025	1	Ø32			
	5E6026	1	Ø40			
	5E6027	1	Ø50			
	04	5E6011A	2		5E6011A	6
05	5E6012A	2		5E6012A	6	
06	5H6006	2	Ø60			
	5E6028	1	MT#2			
	5E6029	1	MT#3			
	5E6030	1	MT#4			
07	5E6031	1	MT#5			
	5H6003	3		5H6022	4	1 1/4"
08	5H6004	3		5H6023	2	1 1/4"
09	5H6007	2	Ø100			
10	5H6013A	36				
11	5H6008	2		5H6008	3	
12	5E6009	2		5H6009	3	
13	536154	12		536154	12	
14	546022	12		546022	12	
15	546023	12		546023	12	
16	536113A	24		536113A	24	
17				5H6038	18	1"
18				5H6021	2	3"
19				5H6020	2	2.5"
20				546084	2	1 3/4"
21				5H6024	2	4"
22				5H6025	2	5"
23				5H6032	2	
24				5H6033	3	
25				5H6026	1	5"
26						

No.	Model Taper Tool	Metric system	Empiral system
1	Bore	Ø12,Ø16,Ø20,Ø25 Ø32,Ø40,Ø50	1/2",1",1 1/4", 1 1/2",1 3/4"
2	End	□ 32	□ 1" □ 1 1/4"
3	Outerdia	□ 32	□ 1" □ 1 1/4"
4	Drill	MT#2,#3,#4,#5	—

E5H1706

JOHN FORD

2-6.1



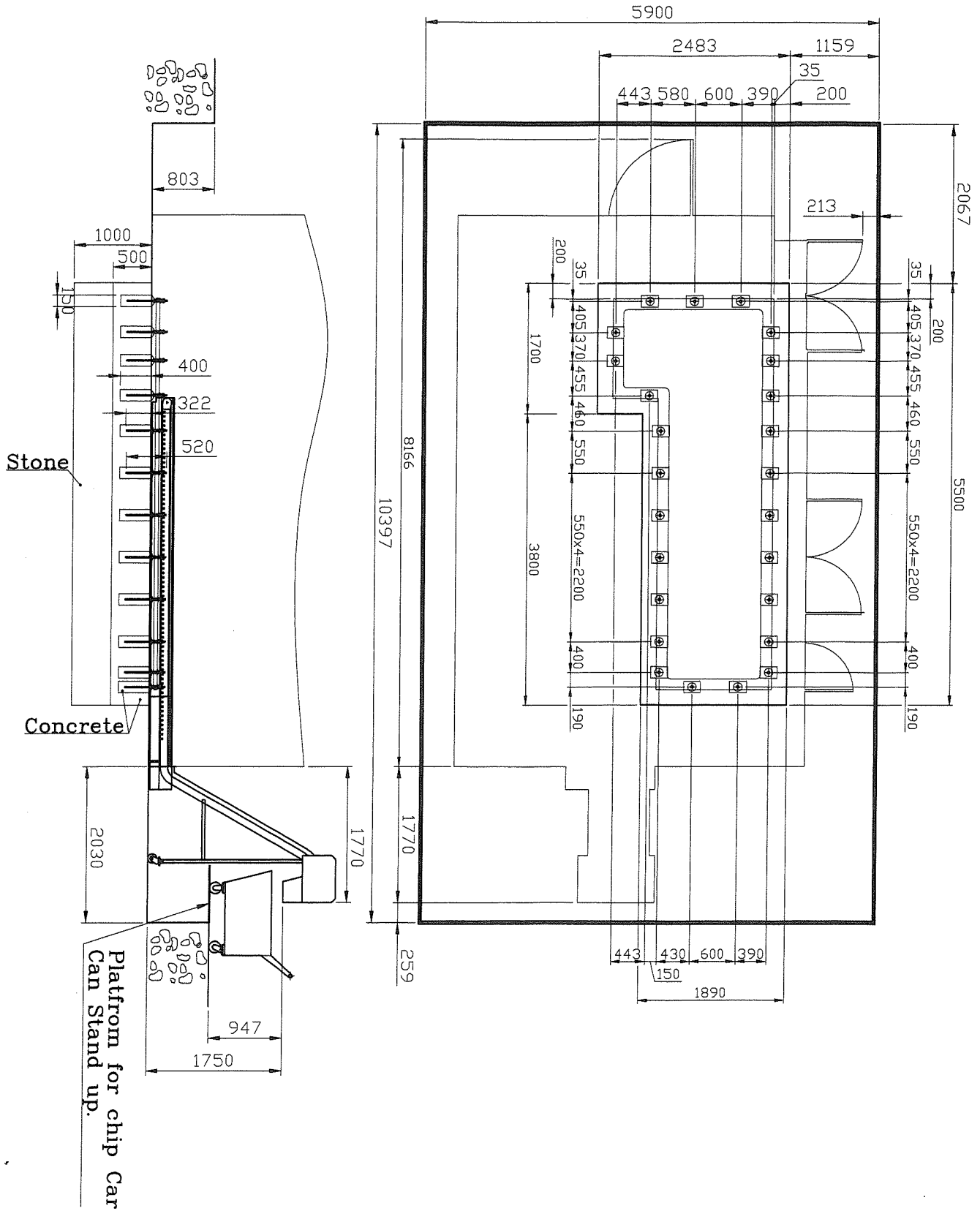
MODEL			DIMENSsION					
			A	B	C	D	E	F
GT	A TYPE	STD.	12" (304mm)	ø91	ø115	M100XP2.0	M100XP2.0	122
		OPT.	15" (381mm)					160
	B TYPE	STD.	15" (381mm)	ø116	ø132.5	M130XP2.0	M130XP2.0	149
		OPT.	18" (450mm)					
	C TYPE	STD.	20" (510mm)	ø139	ø152	M175XP3.0	M150XP2.0	155
		OPT.	24" (610mm)					183
	D TYPE	STD.	20" (510mm)	ø165	ø185	M175XP3.0	M180XP3.0	155
		OPT.	24" (610mm)					183
	E TYPE	STD.	24" (610mm)	ø204	ø236	M215XP3.0	M215XP3.0	155

E5H1509

JOHN FORD

2-9

GT-80D-2S Foundation



PE BAG

